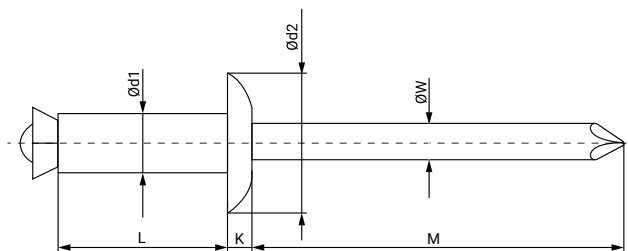


# Remache flor cabeza ancha de aluminio



Los remaches flor cabeza alomada permiten la unión de materiales rígidos con materiales blandos y con tendencia a deformarse. El tubular del remache se abre en cuatro partes como si fuesen los "pétalos de una flor" permitiendo un perfecto montaje.

**MATERIAL:** Cuerpo: Aluminio Al Mg 3,5  
Vástago: Acero A1K

**ACABADO:** Cuerpo: Pulido  
Vástago: Cincado Cr3

| Medida<br>Ø d1 x L | Referencia | Ø d1           | L<br>+1.0 - 0.2 | Ø d2       | M<br>Mín. | K<br>± 0.2 | Ø W<br>± 0.15 | Envase | Embalaje |
|--------------------|------------|----------------|-----------------|------------|-----------|------------|---------------|--------|----------|
| 4 x 8              | 19105290   | 4,0 +0,08-0,15 | 8               | 12,0 +-0,2 | 27,0      | 1,4        | 2,20          | 500    | 4.000    |
| 4 x 10             | 19105303   | 4,0 +0,08-0,15 | 10              | 12,0 +-0,2 | 27,0      | 1,4        | 2,20          | 500    | 4.000    |
| 4 x 12             | 19105071   | 4,0 +0,08-0,15 | 12              | 12,0 +-0,2 | 27,0      | 1,4        | 2,20          | 250    | 4.000    |
| 4 x 14             | 19105160   | 4,0 +0,08-0,15 | 14              | 12,0 +-0,2 | 27,0      | 1,4        | 2,20          | 250    | 4.000    |
| 4 x 16             | 19105098   | 4,0 +0,08-0,15 | 16              | 12,0 +-0,2 | 27,0      | 1,4        | 2,20          | 250    | 2.000    |
| 4 x 18             | 19105792   | 4,0 +0,08-0,15 | 18              | 12,0 +-0,2 | 27,0      | 1,4        | 2,20          | 250    | 2.000    |
| 4 x 20             | 19105434   | 4,0 +0,08-0,15 | 20              | 12,0 +-0,2 | 27,0      | 1,4        | 2,20          | 250    | 2.000    |
| 4,8 x 10           | 19105223   | 4,8 +0,08-0,15 | 10              | 14,0 +-0,3 | 27,0      | 1,8        | 2,73          | 250    | 2.000    |
| 4,8 x 12           | 19105320   | 4,8 +0,08-0,15 | 12              | 14,0 +-0,3 | 27,0      | 1,8        | 2,73          | 250    | 2.000    |
| 4,8 x 14           | 19105143   | 4,8 +0,08-0,15 | 14              | 14,0 +-0,3 | 27,0      | 1,8        | 2,73          | 250    | 2.000    |
| 4,8 x 16           | 19105151   | 4,8 +0,08-0,15 | 16              | 14,0 +-0,3 | 27,0      | 1,8        | 2,73          | 250    | 2.000    |
| 4,8 x 18           | 19105215   | 4,8 +0,08-0,15 | 18              | 14,0 +-0,3 | 27,0      | 1,8        | 2,73          | 200    | 1.600    |
| 4,8 x 21           | 19105194   | 4,8 +0,08-0,15 | 21              | 14,0 +-0,3 | 27,0      | 1,8        | 2,73          | 200    | 1.600    |
| 4,8 x 24           | 19105207   | 4,8 +0,08-0,15 | 24              | 14,0 +-0,3 | 27,0      | 1,8        | 2,73          | 150    | 1.200    |
| 4,8 x 27           | 19105178   | 4,8 +0,08-0,15 | 27              | 14,0 +-0,3 | 27,0      | 1,8        | 2,73          | 150    | 1.200    |
| 4,8 x 30           | 19105450   | 4,8 +0,08-0,15 | 30              | 14,0 +-0,3 | 27,0      | 1,8        | 2,73          | 150    | 1.200    |
| 4,8 x 35           | 19105231   | 4,8 +0,08-0,15 | 35              | 14,0 +-0,3 | 27,0      | 1,8        | 2,73          | 100    | 800      |